



NON-TOXIC APPROACH

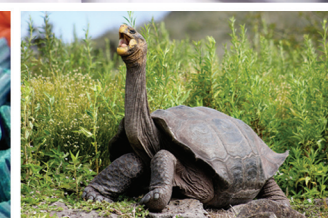
DETEX is a highly palatable non-toxic bait formulation and is ideal for monitoring rodent activity at sensitive accounts. Once rodent activity is detected, PMPs can replace the non-toxic bait with Bell's rodenticide baits, traps or other rodent control products to get rid of an infestation. Because its many textures and tastes appeal to rodents, DETEX with Lumitrack gives technicians the same excellent bait acceptance and weatherability as other BLOX baits from Bell. ■

DETEX is free of these common allergens: Peanuts, milk, eggs, fish, crustaceans and mollusks.



3699 KINSMAN BLVD. | MADISON, WI 53704
www.belllabs.com

Address Service Requested



THE BELL REPORT

North American Edition

VOLUME 39 | NUMBER 2 | APRIL - JUNE 2020

INTRODUCING

Protecta® EVO TUNNEL™

Bell introduces the new **PROTECTA EVO TUNNEL** - a versatile and economical way to protect traps at accounts.



AVAILABLE
AUGUST 3

COMPARING: Norway Rats vs. Roof Rats

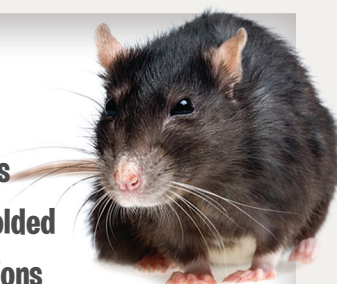
NORWAY RAT *Rattus norvegicus*

- Have blunt noses
- Tail shorter/same length as body
- Droppings have blunt ends
- Ears are smaller than roof rats', and will not cover eyes when folded down
- Live all throughout North America



ROOF RAT *Rattus rattus*

- Have pointy noses
- Tail longer than body
- Droppings have pointed ends
- Ears will cover eyes when folded
- Generally live in coastal regions
- Better climbers than Norway rats



Bell is pleased to introduce the latest addition to the line of Protecta EVO tamper-resistant rodent control product: the Protecta EVO® TUNNEL™. This new, tamper-resistant trap station is a versatile and economical way to protect traps at accounts.

The EVO TUNNEL can be used indoors or outdoors, and can be secured to fences or pipes via cable ties in both the vertical and horizontal position. A low and discreet profile, the EVO TUNNEL provides tamper-resistant

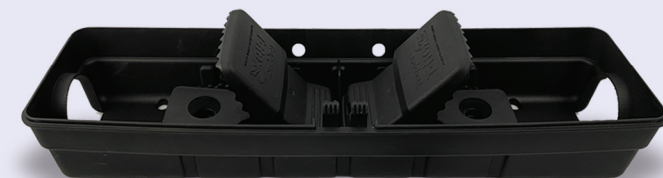
coverage of a variety of rat and mouse traps.

The EVO TUNNEL accommodates two TRAPPER® T-REX® rat snap traps or two TRAPPER® T-REX® iQ™ rat snap traps, which can be secured tightly into the EVO TUNNEL base. The EVO TUNNEL can also provide cover for mouse sized products such as two Mini-Rex mouse snap traps, two TRAPPER® Mouse glue trays or two TRAPPER® MAX glue boards. EVO TUNNEL opens and locks quickly with Bell's fast-open-

ing EVO key, and EVO TUNNEL stations are stackable for easy handling.

When the EVO TUNNEL is used in tandem with the TRAPPER T-REX or T-REX iQ, the result is a system that meets stringent NAWAC animal welfare standards established in New Zealand and recognized around the world.

Available August 1st, the EVO TUNNEL is a useful trap protection device for any technician's tool box. ■



iQ PRODUCTS: SOCIALLY DISTANCED RODENT CONTROL

BEFORE

AFTER

CRITICAL TO ACT NOW

Contact your local distributor or Bell representative to learn how these products can help you streamline your service and maintain safe social distance.

CAPTURE INDOOR RODENT ACTIVITY, WITHOUT GOING INSIDE

SHORTEN DURATION OF SERVICE VISIT

MAINTAIN SAFE SOCIAL DISTANCE AT YOUR ACCOUNTS

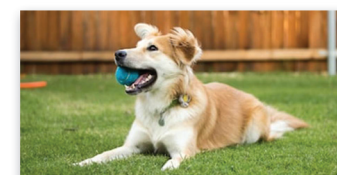
OPTIMIZE YOUR SERVICE BY STAYING AHEAD OF CHANGES IN RODENT BEHAVIOR

DELIVER CONTACTLESS RODENT CONTROL

RESIDENTIAL RODENT INSPECTION CHECKLIST



✓ Is this your first call to a PMP?



✓ Why are you calling?

✓ Have you used any over-the-counter rodenticides? If so, where have they been placed?



✓ Do you have children or pets?

✓ Any changes to the property or surrounding properties?



✓ Gaps sealed - 1/4" for a mouse and 1/2" for a rat?

✓ Pipes enter structure sealed? Exhaust, pipes, etc.?

✓ Branches trimmed that overlap/touch buildings



✓ Abutting any water sources or vegetation?

✓ Door sweeps; are they properly installed, if any?



✓ Where are the sanitation issues?

✓ Droppings and/or sebum where are the signs?

Personnel News

Freeman Joins Bell Team



Ashley Freeman

We are pleased to introduce our new Northwest Technical Representative, Ashley Freeman to our Bell team. Ashley covers the states of Washington, Oregon, Idaho, Montana, Wyoming, Utah, Northern Nevada, and Northern California. Ashley comes to Bell with an extensive background in the pest control industry, and she holds a Master's of Science in Public Health from Tulane University as well as a Bachelor's Degree in Cultural Anthropology from the University of New Orleans.

"Bell is the leader in rodent management, from every aspect of it. We do it by supporting PMPs and distributors by leading them to smarter pest management decisions, navigate regulations, interpret labels, teach safety, but most importantly we help them succeed with their customers. I've always supported Bell products because Bell supports us. WOW, I'm impressed to be a part of the team. I plan to be for a very long time.

I'm particularly excited about Bell Sensing Technologies. I believe it is going to FOREVER change rodent control for the better. When I saw iQ, I instantly understood it and its power. I couldn't be more thrilled to promote it. I never ever want to miss an opportunity to help someone be a rodent management rockstar."

We are excited to have Ashley as part of our domestic sales team. ■